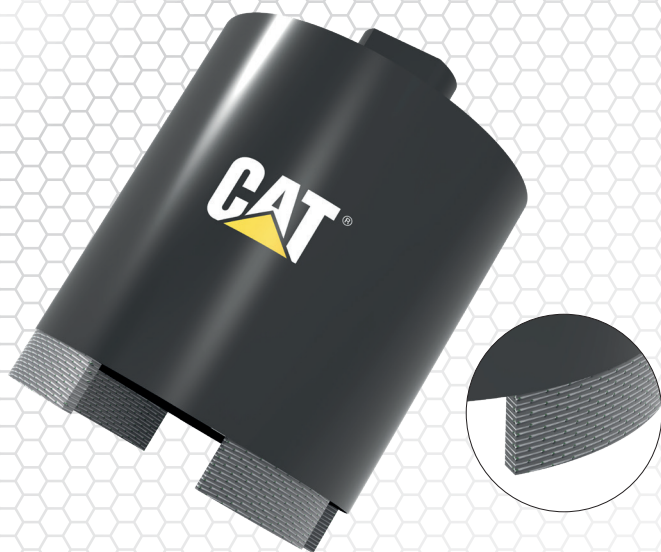


**CAT****XMATSD****MATRIX® SEGMENTED SOCKET****UNIVERSAL MULTI MATERIALS****1000 Expert**

CAT® 1000 Expert Matrix® Auto Diamond Placement, laser welded dry diamond core drills are the most advanced dry core drill. Ultra high quality diamond grit & high quality matrix enable this product to have a great application span across a wide range of applications from hard to general purposes materials. Ultra long life & fast drilling penetration.

DO NOT USE ON IMPACT MODE. LET THE DIAMOND DO THE WORK .

ATTRIBUTES

- **LASER WELDED - FAST AGGRESSIVE DRILLING**
- **LONG LIFE HIGH QUALITY DIAMOND GRIT & BOND FORMULATION.**

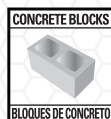
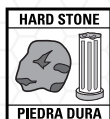
APPLICATION

★ ★ ★ ★
HARD TO MEDIUM AGGREGATE CONCRETE (CHERT - TRAP ROCK - RIVER GRAVEL), MEDIUM AGGREGATE CONCRETE (TRAPROCK - QUARTZ), SOFT - MEDIUM AGGREGATE CONCRETE (GRANITE - LIMESTONE), CLASS A ENGINEERING BRICK 125 N/MM², TERRACOTTA, CLASS B ENGINEERING BRICK 75N/MM², HARD LIMESTONE, LIMESTONE AGGREGATE CONCRETE, LIGHTLY REINFORCED CONCRETE, CONCRETE PAVERS - CURBS - SLABS, CONCRETE ROOF TILES - PIPES, HARD FACING BRICK, MEDIUM FACING BRICK, CONCRETE BLOCKS OVER 15N/MM², HARD SLATE, HARD SANDSTONE (FINE GRIT), MEDIUM SANDSTONE (MEDIUM GRIT) ON HARDER MATERIALS USE A SLOWER PERIPHERAL SPEED RPM.

★ ★ ★
GRANITE, QUARTZITE, HEAVILY STEEL REINFORCED CONCRETE, CRITICALLY HARD AGGREGATE CONCRETE (FLINT, CHERT), REFRACTORY BRICK, CLAY PIPE - ROOF TILES, CLAY PAVERS, CLAY PAVERS, INDIAN STONE (KOTA), TRAVERTINE, PORPHYRY, BASALT, SOFT SLATE, MARBLE, SOFT SANDSTONE (COARSE GRIT), CONCRETE SCREED, PLASTER - GROUT, CONCRETE BLOCK UNDER 15N/MM², THERMAL BLOCK 7 N/MM², LIGNACITE BLOCKS.

★ ★
QUARRY TILES, ASPHALT OVER CONCRETE, LIGNACITE BLOCKS.

★
ASPHALT, GREEN CONCRETE UNIVERSAL, GREEN CONCRETE WITH VERY HARD AGGREGATE, GREEN CONCRETE WITH MEDIUM HARD AGGREGATE, GREEN CONCRETE WITH MEDIUM SOFT AGGREGATE, LAVA ROCK, PUMICE.

LASER WELDED**MATRIX**
AUTO PLACEMENT TECHNOLOGY**DRY DRILLING****PLASTER****YESO****HARD CONCRETE****AGREGADO DURO****CONCRETE BLOCKS****BLOQUES DE CONCRETO****BRICKS****LADRILLOS****HARD STONE****PIEDRA DURA**

PRODUCT		DIAMETER		SEGMENT HEIGHT		SEGMENT WIDTH		FITTING TYPE		MACHINES USED
PART NO	CODE NO	MM	INCH	MM	INCH	MM	INCH	MM	INCH	
DA39344	XMATSD62	68	2 43/64	10	0.394	3.5	0.138	M16 FEMALE	N/A	
DA39345	XMATSD82	82	3 15/64	10	0.394	3.5	0.138	M16 FEMALE	N/A	



WARNING: This product can expose you to "Nickel" which is known to the State of California to cause cancer & birth defects.
ADVERTENCIA: Este producto puede exponerlo a un "Níquel" que el Estado de California sabe que causa cáncer y defectos de nacimiento.
AVERTISSEMENT: ce produit peut vous exposer à un "Nickel" connu de l'État de Californie pour provoquer le cancer et des malformations congénitales. www.P65Warnings.ca.gov



©2023 Caterpillar. All Rights Reserved. CAT, CATERPILLAR, LET'S DO THE WORK, their respective logos, "Caterpillar Corporate Yellow", the "Power Edge" & Cat "Modern Hex" trade dress as well as corporate & product identity used herein, are trademarks of Caterpillar & may not be used without permission. C6 DIAMOND LLC, a licensee of Caterpillar Inc.

SILICA DUST: Workers who are exposed to respirable crystalline silica dust are at increased risk of developing serious silica-related diseases. It is necessary to use saws & other machinery that is equipped with an integrated water delivery system that continuously feeds water to the blade. Operate & maintain all tools in accordance with manufacturer's instructions to minimize dust emissions & always wear the correct ventilator. For more info visit: www.osha.gov/sites/default/files/publications/OSHA3681.pdf

catdiamondtools.com

EN2023XMATSD